

# CONTI+ ultra

Sustainable | Hygienic | Safe | Smart





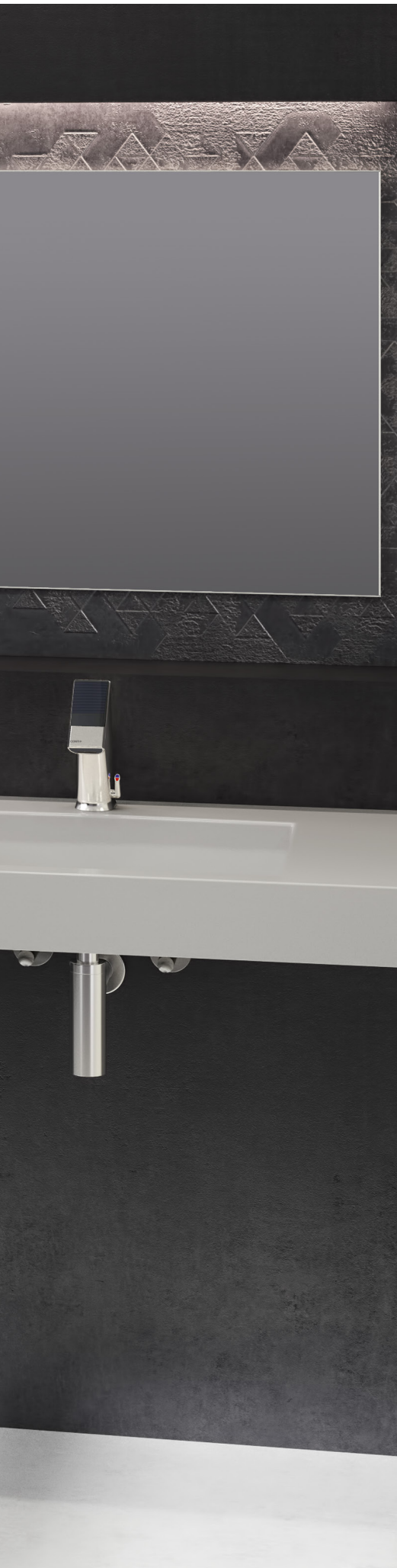
# CONTI+ ultra

## The smart solution

If you are looking to save water and energy, meet the most stringent standards of hygiene while also providing a user friendly yet vandal-proof solution, CONTI+ ultra is the number one choice.

Suitable for every environment, from commercial and public settings to sanitary facilities in the health sector, CONTI+ ultra offers a broad range of size, colour and energy supply options.

Its smart design ensures users enjoy an exceptionally high level of hygiene and reliability for ultimate convenience. Fully controllable, this product also promotes the sustainable use of resources.



# Pioneering

---

## CONTI+ ultra: reliable & innovative

CONTI+ ultra offers the best possible user experience and a high degree of reliability thanks to its intelligent, highly developed technology. The tap's low water and energy consumption set the highest possible standards while its special hygiene functions ensure this is a smart washroom solution that can be depended upon.



### Sustainable

Water savings of up to 80% and high energy efficiency due to highly developed technology. Long term, trouble-free operation due to high grade materials and components.



### Hygienic

Protection against transfer of bacteria due to touch-free operation. Reduction in bacterial growth through use of germ inhibiting materials and hygiene flushing.



### CNX water management system

Faucets can be easily and intuitively integrated into the advanced CNX water management system from CONTI+. Essential flushing is automated and documented.



### CONTI+ Service APP

Programming, reading and analysing in combination with the BLE Converter (Bluetooth®).



### OneTool-Service

Only an Allen key is required to open the faucet. All other servicing work can be carried out in just a few seconds from above – without the need for tools.



### Modular

Individual, tailored solutions for every environment and for every application – thanks to the clever modular design. Available in a choice of colours and finishes.



### VARIOconnect

The VARIOconnect interface offers a range of connection options for supplying power (battery, single or multiple power supply), data transfer and control.



### Features

- TwistStop: integrated stop valve in tap
- Adjustable hot water lock
- LED control: tap status display
- Touch control for special functions and programming



# Sustainable

## CONTI+ ultra: resource-efficient technology

With its touch-free operation, CONTI+ ultra saves up to 80% water since water only flows when it's needed. This also decreases the amount of energy used to heat the water.

The optional solar module or turbine (built into the faucet) generates sufficient energy to extend battery life by up to eight years, helping the owner of the facility save on the cost of both water and energy.

High grade materials result in long term, trouble-free operation while lead-free components ensure consistent water quality.



### Water saving

Reduced water consumption of up to 80 % thanks to economical flow rates of just 1.9 to 5.7 l/min thanks to alternative valve units and aerators. Water run-on times can also be shortened for even greater water savings.



### Energy efficient

Extended life with commercial alkaline batteries of up to four years and full utilisation of battery capacity due to innovative power management.



### Solar

A battery life of up to eight years is made possible thanks to the optional solar module which can also harness energy from artificial light sources. Ideal for use in semi-public settings.



### Turbine

Battery life extended by up to eight years due to optional turbine: this mini power station uses flowing water to generate electricity. The perfect solution for facilities with heavy footfall.



CONTI+ ultra  
with solar operation



CONTI+ ultra  
with turbine operation

# Hygienic

---

## CONTI+ ultra: meeting highest hygiene standards

The touch-free CONTI+ ultra ensures thorough hygiene, and its sleek shape makes it easy to clean.

Germ-inhibiting materials and hygiene flushing help prevent faucets from becoming a breeding ground for germs. The pipework is both lead-free and bacteria-resistant.

Designed with a high spout for the health sector and industrial applica-

tions, this faucet allows users to wash up to their elbows.

The hygiene mode, which has been specifically developed for hospitals, doctors' surgeries and other areas requiring rigorous hand cleanliness, features a countdown to help users wash their hands for the prescribed length of time.





#### Hygienic operation

- Reliable, touch-free operation
- Water flows consistently, triggered by IR sensor at the spout
- Programmable temperature (removable temperature-adjusting lever)



#### Clean water

- Germ-inhibiting materials
- Lead-free pipework
- Optional laminar aerator



#### Hygiene flushing

- 12/24 hour interval can be activated, fully automatic hygiene flushing
- Flushing duration and interval adjustable
- Required start time can be adjusted via the CNX water management system



#### Countdown (Expert version)

Designed especially for medical facilities: the display shows the remaining time required for hand washing, so there is no need for clock watching.



CNX water management system compatible  
Analysis and adjustment of all the operating data and functions stored in the tap.



#### CONTI+ Service APP

Programming, reading and analysing in combination with the BLE Converter (Bluetooth®).

# Modular

CONTI+ ultra: for every application

Electronic module  
Public

Electronic module  
Turbine integrated in the tap

Countdown and temperature display  
Display of water running time and water temperature

LED control  
Display of operating status

Touch  
for programming and parameter setting



Exchange tool  
for aerator

Aerator  
Optional jet, spray or laminar aerator

Opening screw  
Impossible to lose and vandal-proof



All models and all sizes available  
for the CONTI+ ultra range



Electronic module  
Expert Solar

Valve module 5.7 l/min (blue)  
Solenoid valve with strainer

TwistStop  
Shut-off water device in the faucet

Battery box  
with 4 alkaline batteries (type AA)

Electronic module  
Public Solar

Strainer  
Reserve / replacement strainer

Save water with the  
valve module 1.9 l/min (green)  
with spray regulator (can be  
retrofitted to existing ultra faucets)

Temperature-adjusting lever  
can be removed to  
fix the temperature setting

VARIOconnect  
Interface





#### OneTool service

Only an Allen key is required to open the faucet. All other servicing work can be carried out in just a few seconds from above – without the need for tools.



#### Modular

Individual tailored solutions for every environment and for every application – thanks to the clever modular design. Available in a choice of colours and finishes.



#### LED control

Rapid diagnosis of operating status:

- Low / flat battery display
- Valve function
- Programming signal via touch control



#### Vandal protection

To ensure reliable operation and to safeguard against vandalism, the faucet has a robust shape and a vandal-proof aerator. Plus, all hydraulic components are integrated into the faucet.



#### VARIOconnect

The VARIOconnect interface offers a range of connection options for supplying power (battery, single or multiple power supply), data transfer and control:

- Call up of operating data
- Individual parameter setting of hygiene flushing and water running times

# Reliable

---

## CONTI+ ultra: utterly dependable

An advanced technology that has proved its worth, CONTI+ ultra ensures reliable, long lasting operation. Its vandal-proof components are made to be tough and totally infallible.

If servicing work needs to be carried out, the OneTool service along with the faucets modular construction make maintenance extremely easy and convenient.

Thanks to the TwistStop, there is no need to shut off the water using an angle valve; instead simply turning the valve module will stop the water supply. All components can be changed by hand without any tools.

A complete service can only be undertaken above the washbasin. Operating states, such as 'battery low', can be easily identified by the LEDs on the side.



CONTI+ ultra GS: Short faucet – with a high level of functionality and innovation



## Finishes and colour variations \*

For an aesthetically pleasing washroom with an individual touch, the new CONTI+ ultra colour variations offer an inspiring choice.



Brushed chrome



Brushed nickel



Polished brass

## Aerator options

Individual jet regulators: Various jet patterns are available in conjunction with the corresponding valve unit with 5.7 l/min or 1.9 l/min.



Spray regulator for  
1.9 l/min valve unit



Jet aerator for  
5.7 l/min valve unit



Laminar aerator for  
5.7 l/min valve unit

\* delivery date upon request

# Individual

## CONTI+ ultra: variations

### Washbasin models

CONTI+ ultra is available in three sizes with or without mixing. Each model is ready for data exchange via cable or wireless connection.



GS  
Total height: 124 mm  
Spout height: 51 mm



GM  
Total height: 178 mm  
Spout height: 94 mm



GH  
Total height: 252 mm  
Spout height: 162 mm

### Wall models

The CONTI+ ultra wall model, with its high quality design, is suitable for use in hygienically critical environments or where installation on a washbasin is not desirable.



Wall without solar  
Spout length: 244 mm  
Spout height: any



Wall with solar  
Spout length: 244 mm  
Spout height: any

### Energy options

Stylish technology offering a variety of modules and superior energy options. All types of sanitary facilities are catered for with four energy options: mains, battery, solar and turbine operation.



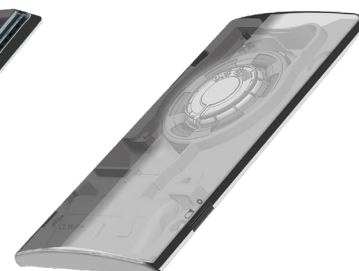
Public  
The definitive model for use in public areas. A clear, well rounded electronic module.



Public Solar  
Energy from solar cells extends the battery life to up to eight years.



Expert Solar  
Solar cells together with display of water temperature and water running time.



Turbine  
Energy from turbine extends the battery life to up to eight years.

# Smart

CONTI+ ultra: networkable with CNX



CONTI+ ultra and the CNX Water management system – Systematic approach with CONTI+

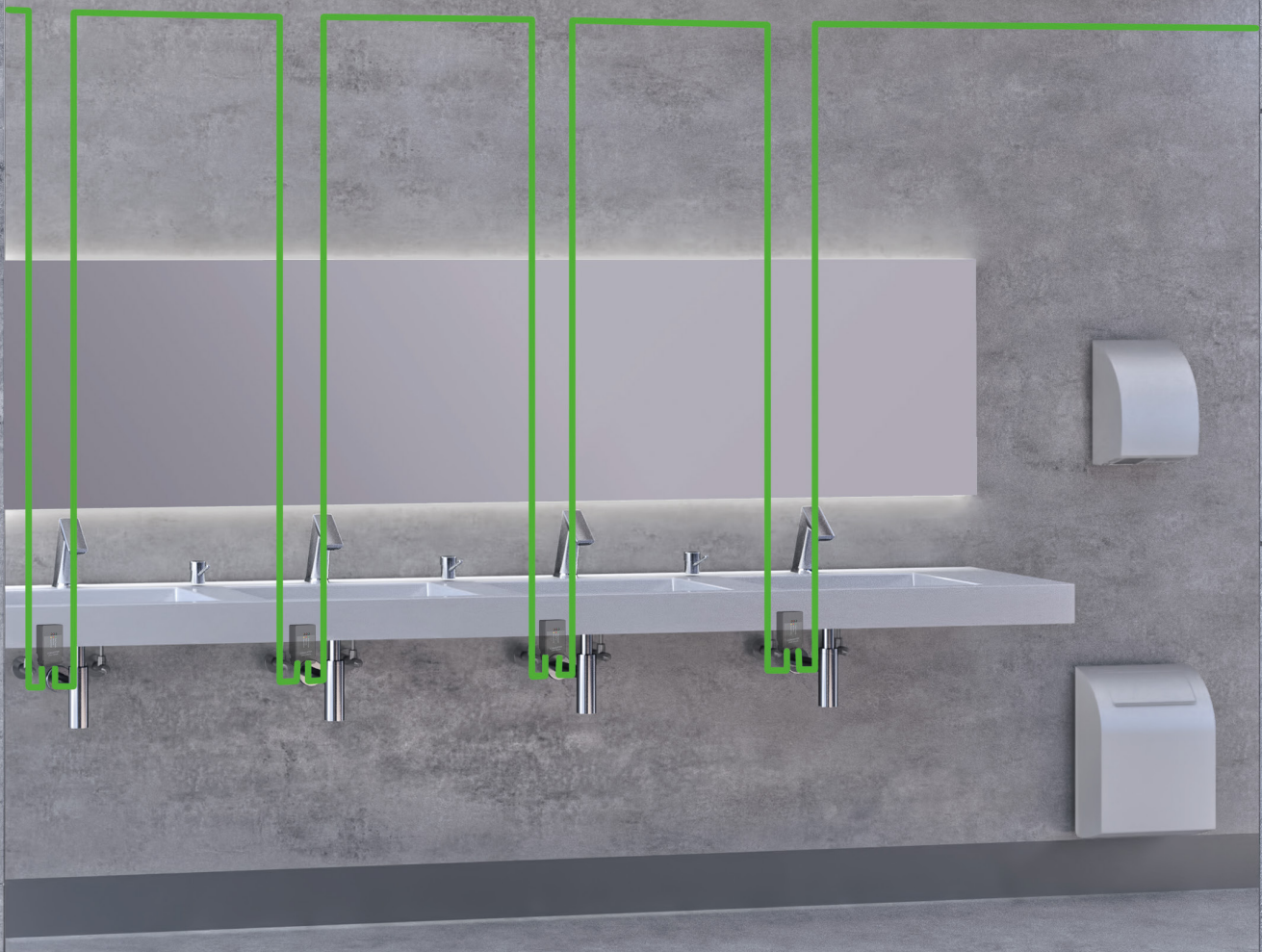
The intuitive CNX water management system from CONTI+ has been created to meet the most demanding hygiene requirements. The user friendly interval or calendar functions present an easy way to automate and efficiently document essential flushing.

What's more, the CNX offers a wide range of additional operating and safety functions – for example the ability to program operating times for thermal disinfection and to set operating or cleaning stops.

All operations and actions as well as any error messages are securely documented and managed.

Taps can be programmed individually or in location groups for maximum efficiency. This can be achieved easily and intuitively by dragging and dropping tiles.





## Dependable & innovative

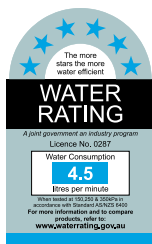
Hygienic, smart shower room and washroom concepts to improve quality of life have been the hallmark of the CONTI+ brand for 50 years.

With our innovative technologies, broad product portfolio and comprehensive range of services, we offer optimum solutions to meet all our customers' needs for new build and refurbishment projects. Impressive, flexible all-round expertise.

From advanced electronic and mechanical shower systems, washbasin faucets and urinal controls through to washbasins, as well as complete wash-room equipment and water management systems, we take an integrated approach to all products and system solutions, with a strong focus on sustainability, hygiene and reliability. As a result, the CONTI+ brand is respected among design engineers and architects as a professional partner.



CONTI+ ultra online



Certificates are product related and not valid in general

CONTI Sanitärarmaturen GmbH  
 Hauptstrasse 98  
 35435 Wettenberg | Germany  
 Phone +49 641 98221 0  
 Fax +49 641 98221 50  
 info@conti.plus  
 www.conti.plus

Member of Fortuna Group 

